

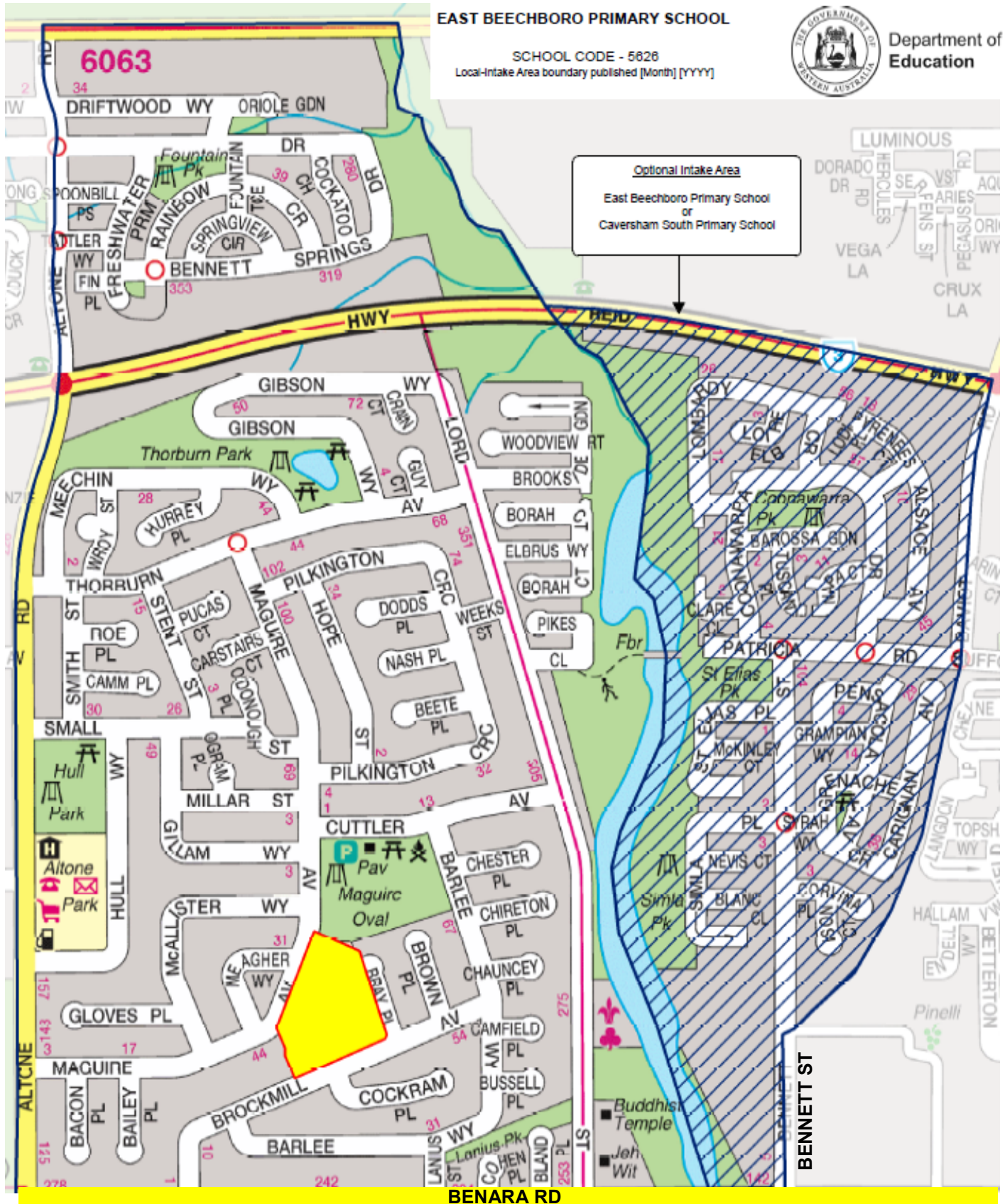
**EAST BEECHBORO PRIMARY SCHOOL**

SCHOOL CODE - 5626

Local-Intake Area boundary published [Month] [YYYY]



Department of Education



—— EBPS LOCAL INTAKE AREA



EBPS SHARED AREA WITH CAVERSHAM VALLEY PS

**EAST BEECHBORO PRIMARY SCHOOL**—(JUNE 2019) The following will define the local-intake area of this school from 2020—From the junction of Benara Road and Altone Road, north along Altone Road (east side included) to Marshall Road, east along Marshall Road (south side included) to a point where it crosses with Bennett Brook, generally south along Bennett Brook to a point where it crosses with Benara Road and west along Benara Road (north side included) to Altone Road.

The following defines an optional area between Caversham Valley Primary School and East Beechboro Primary School—From a point where Benara Road crosses Bennett Brook, east along Benara Road (north side included) to Bennett Street, north along Bennett Street (west side included) to a point where the future road reserve for Daviot Road intersects with Bennett Street, generally north along this road reserve (west side included) to Daviot Road, north along Daviot Road (west side included) to Reid Highway, west along Reid Highway (south side included) to a point where it crosses with Bennett Brook, and generally south along Bennett Brook to the point where it crosses with Benara Road.